

Spatial behaviour of fallow deer in NSW



Andrew Bengsen
Vertebrate Pest Research Unit



Department of
Primary Industries

Why: effective control

How big?

How often?

Where and when?



Why: disease risk



What

Activity range sizes:

- Daily
- Seasonal

Seasonal movements

Emigration

Response to aerial shooting



How

Helicopter net gunning

- Quick
- Selective
- Good coverage
- Easy(ish) on deer





Early results

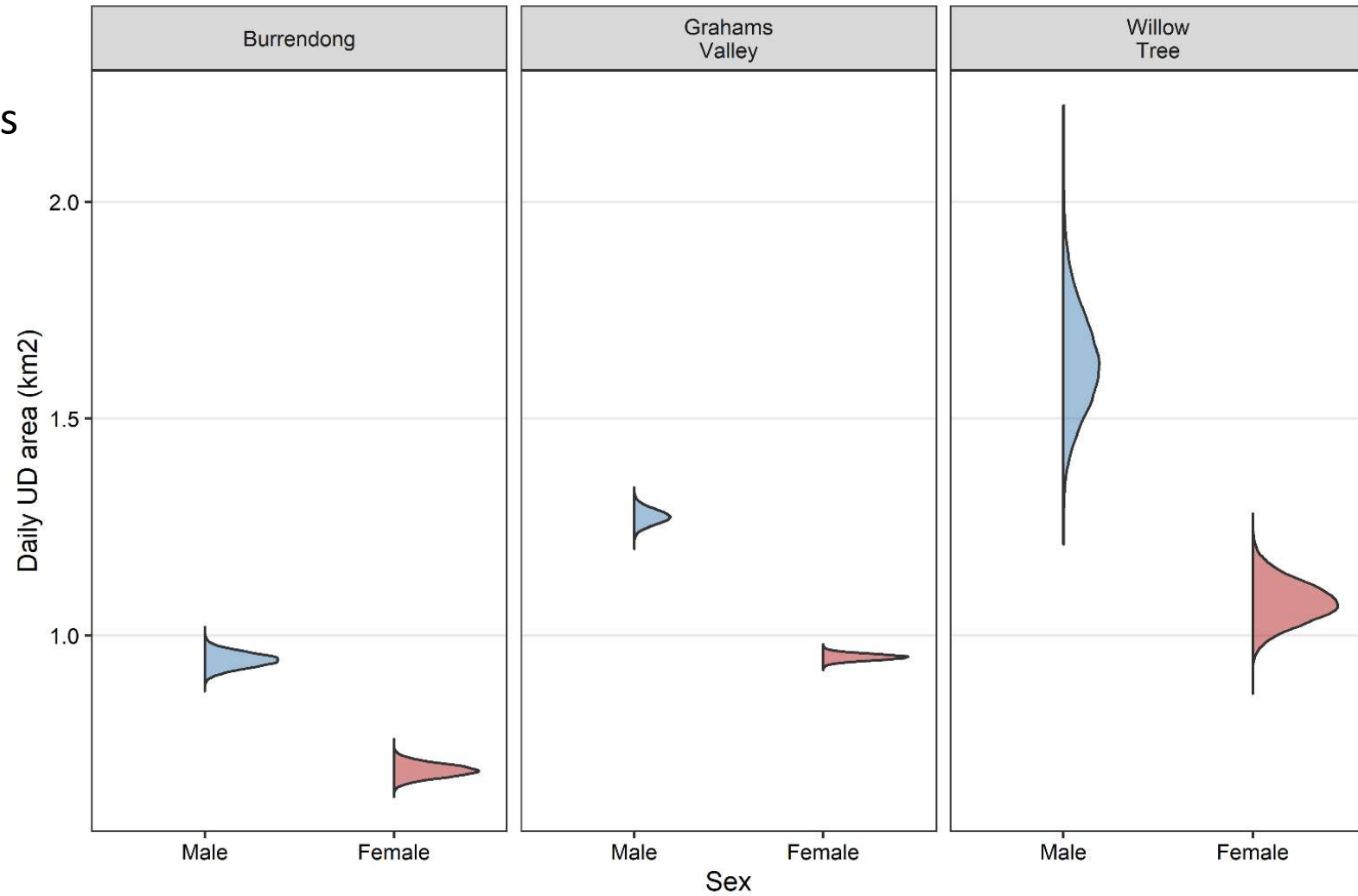
Captured 72 deer at 3 sites

Data from 69 deer

> 18 months

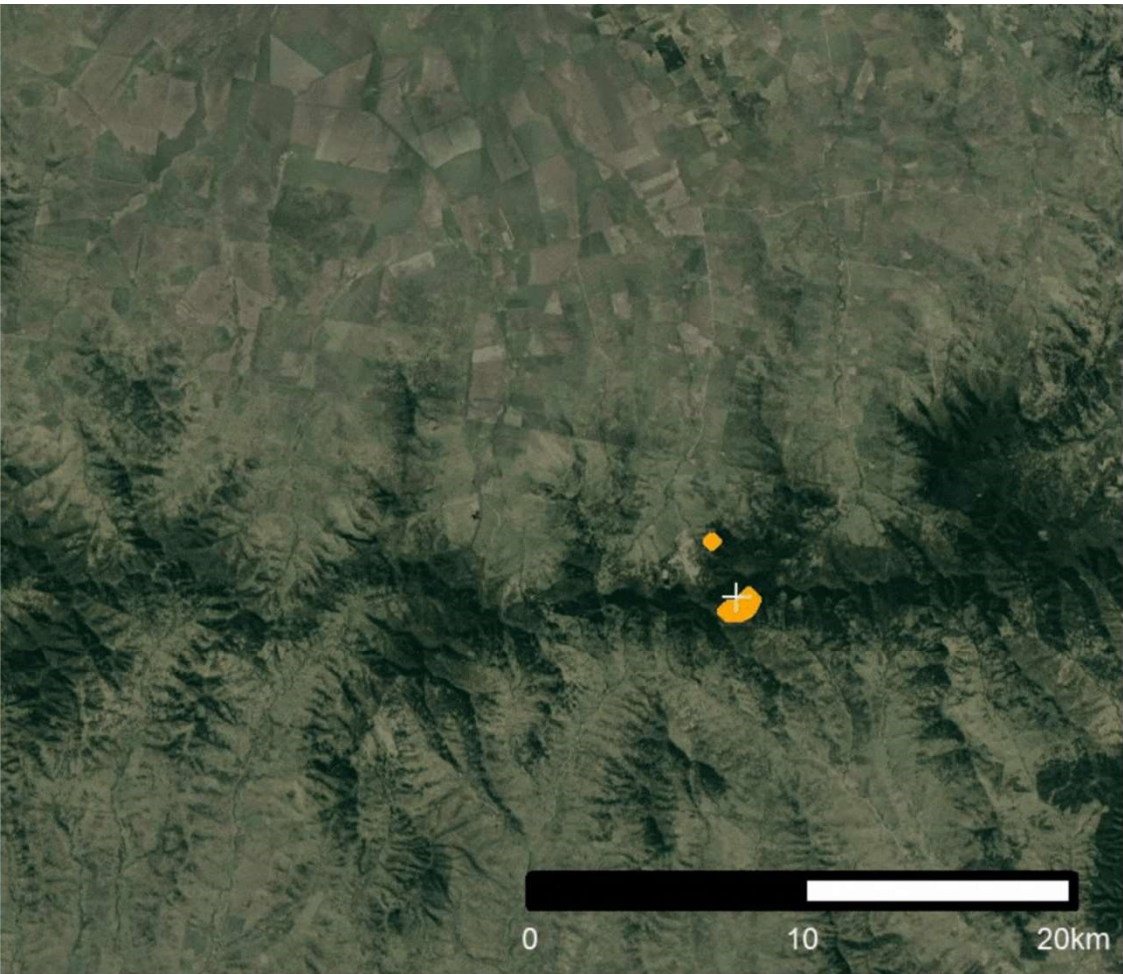
Does sedentary and tight

Bucks big and loose





Doe



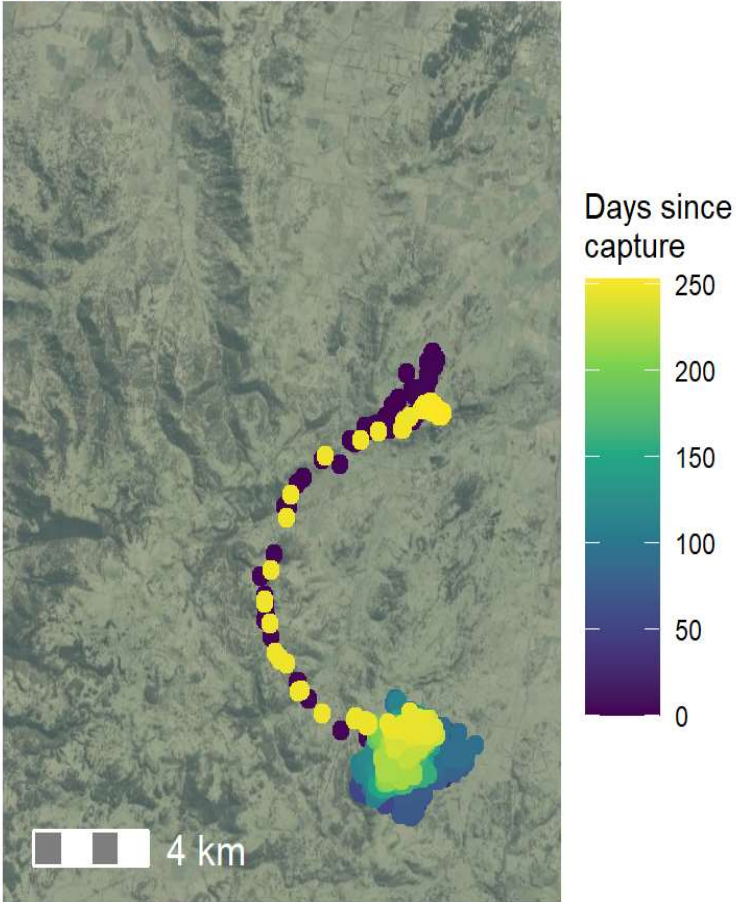
Buck

95% 3D kernel UD daily activity range of a doe and buck over 20 days in April 2022

Early results

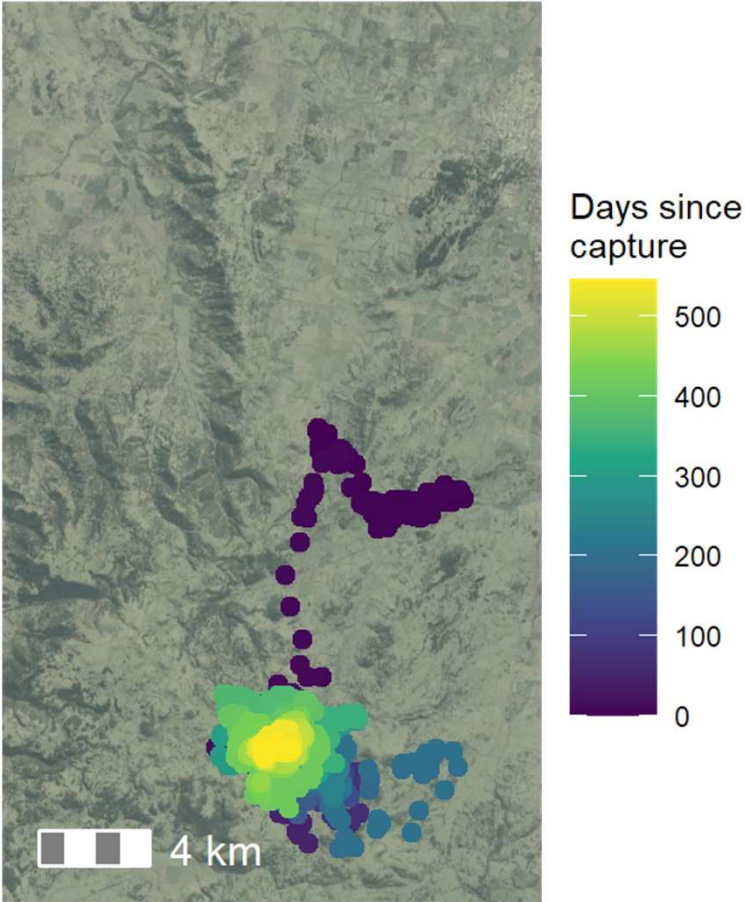
Some large movements in bucks

Buck 46988 Removed



2020-07-02 13:55:00 to 2021-03-12 14:00:00

Buck 47158 Alive



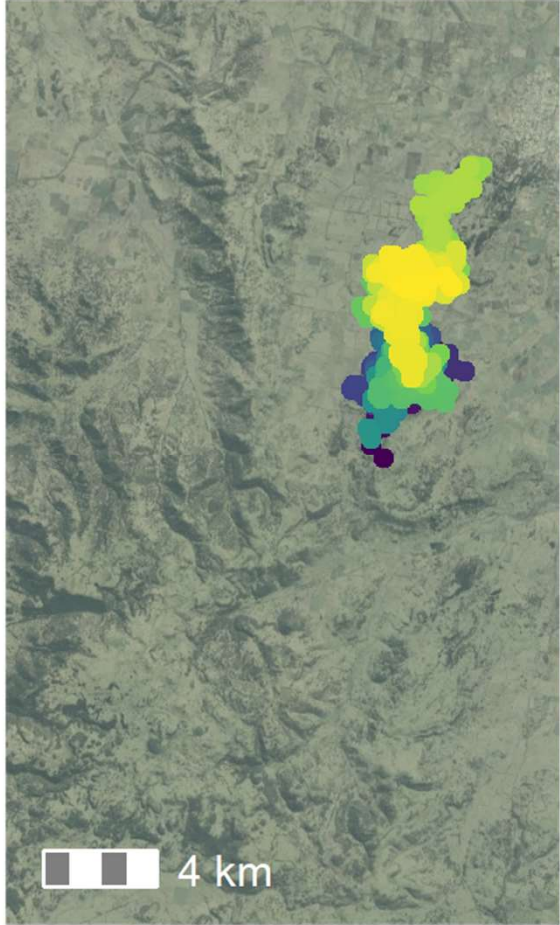
2020-09-14 15:28:00 to 2022-03-14 12:00:00

Early results

Some large movements in bucks

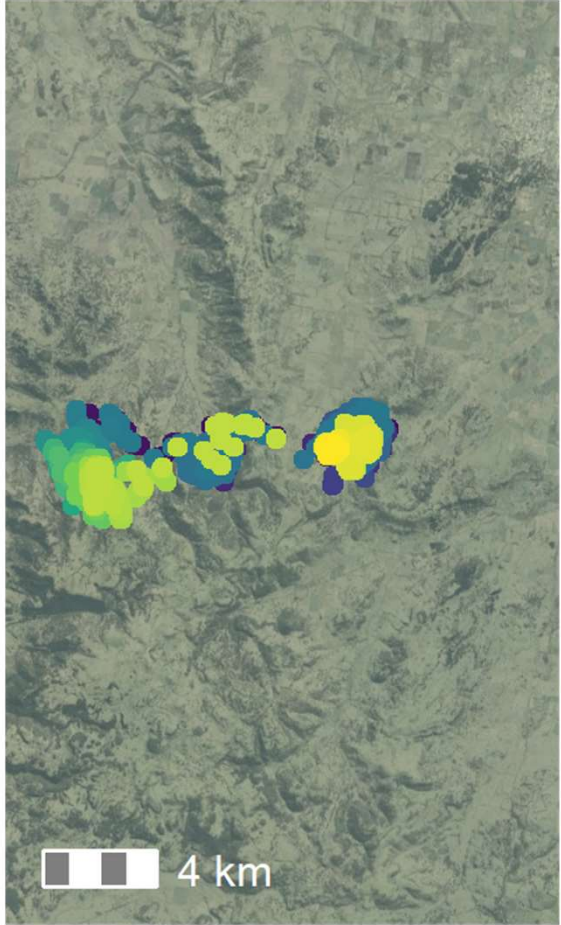
Drifting activity ranges

Buck 47166 Dead

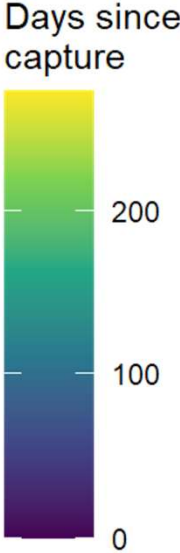


2020-09-14 13:50:00 to 2021-06-28 17:00:00

Doe 146989 Alive



2021-06-15 10:45:00 to 2022-03-15 07:00:00



Early results

Some large movements in bucks

Drifting activity ranges

Occasional jumps & excursions

BD bucks, daily, 2021-10-05 : 2022-05-03



Implications



- Short-term stability
- Longer-term drift
- Occasional range jumps

- To be continued...

<https://www.publish.csiro.au/WR/WR21156>

andrew.bengsen@dpi.nsw.gov.au

<https://andrewbengsen.github.io/Presentations.html>

