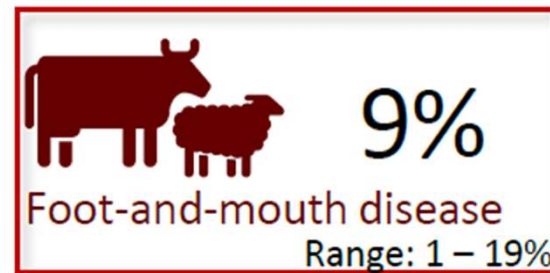
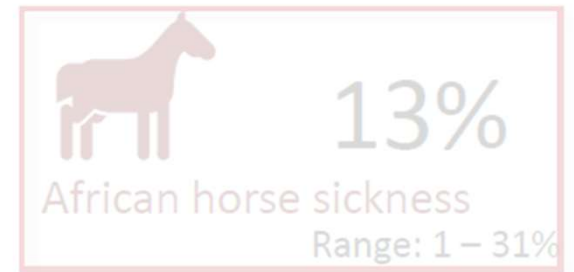
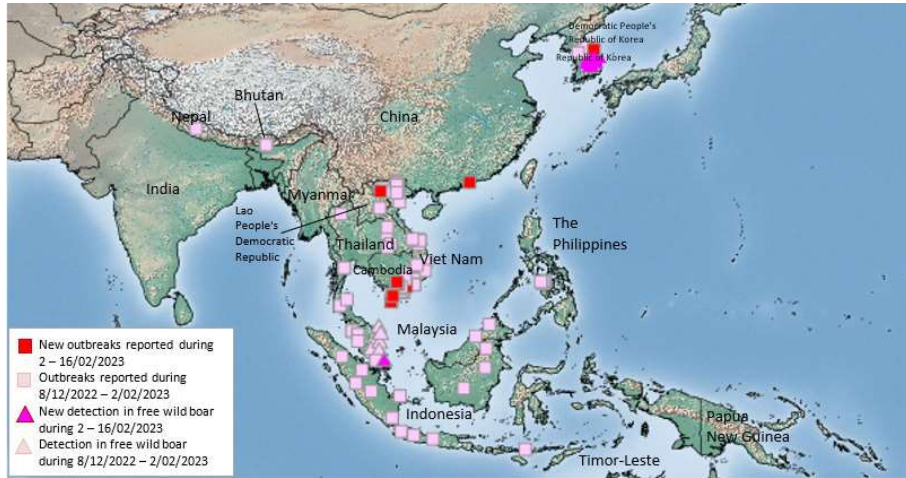


# Wildlife Disease Surveillance and Modelling

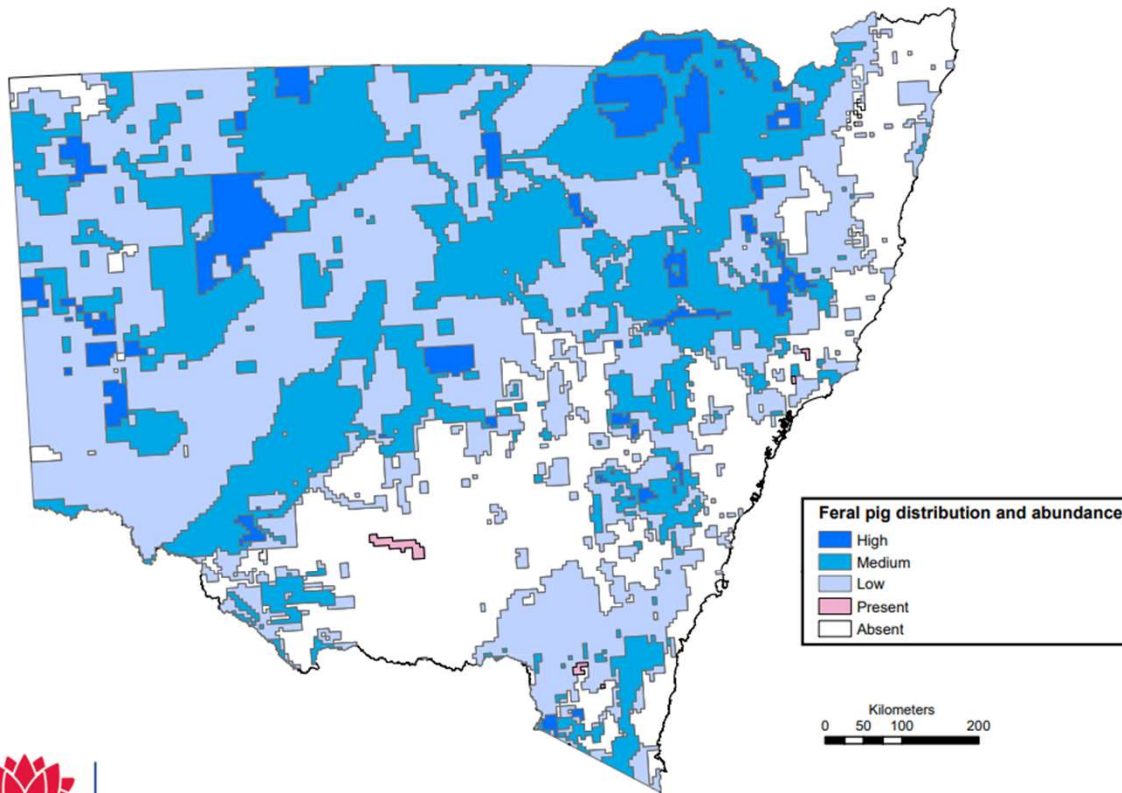


Andrew Bengsen, Vertebrate Pest Research Unit

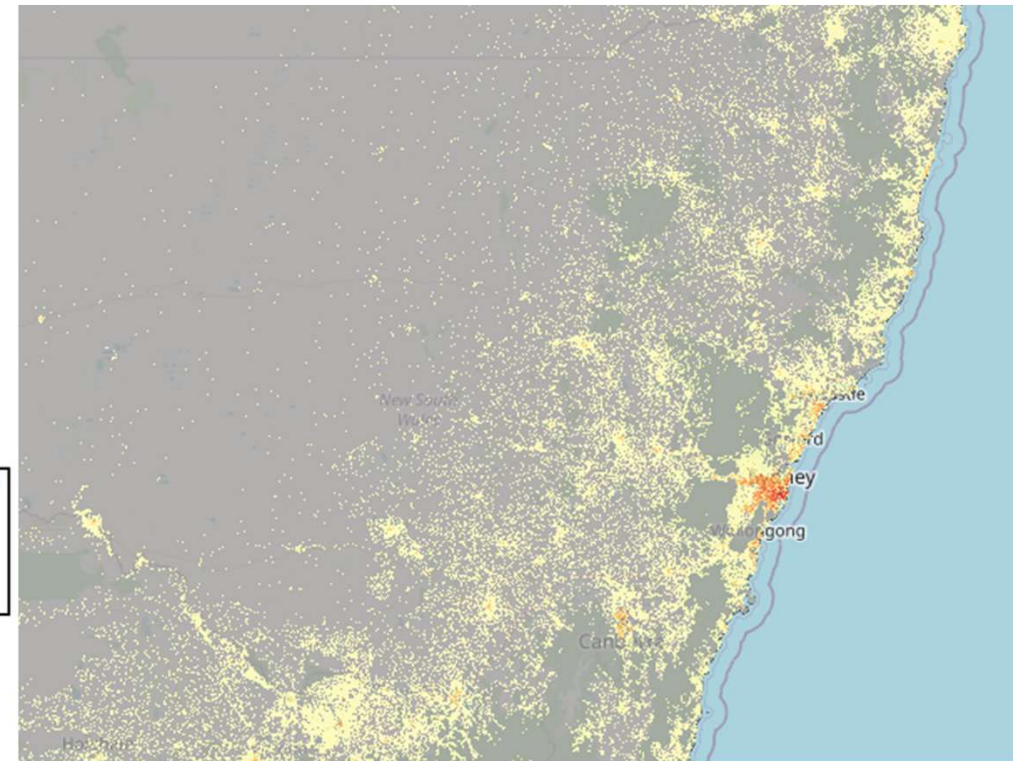




Feral pig distribution and relative abundance 2020



Human distribution 2022



## Surveillance

Adaptive sampling strategy for detection of exotic and emerging diseases *in the wild*

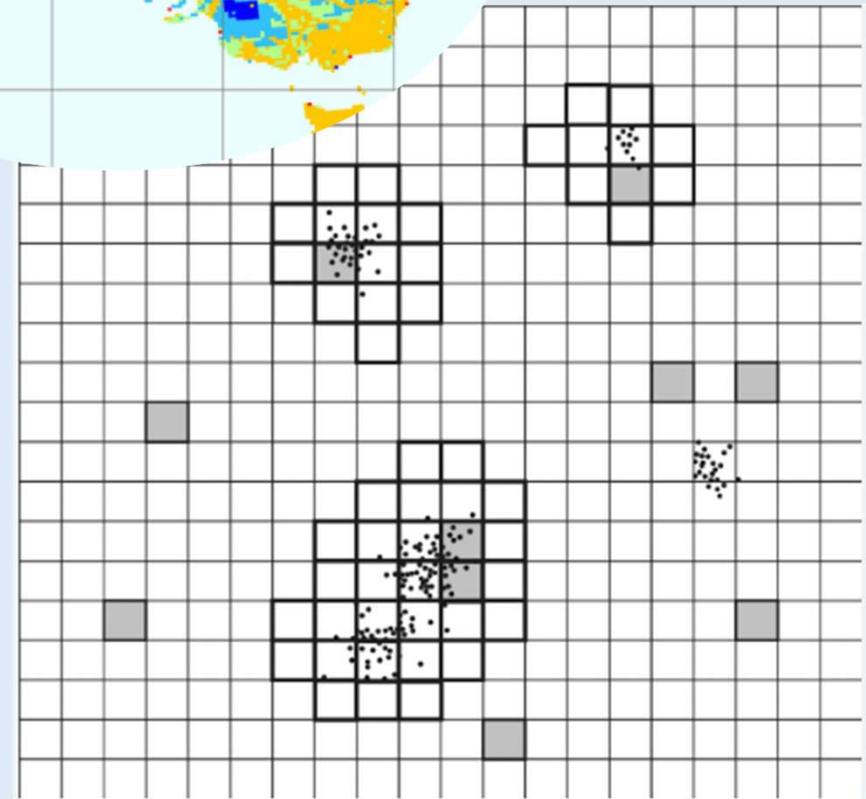
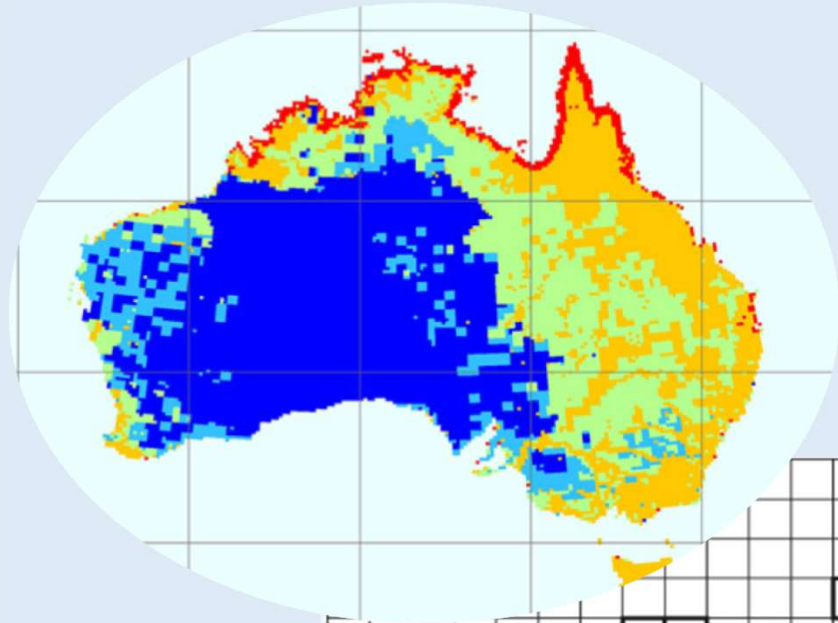
## Response

Develop *management* strategies based on models of disease transmission *in the wild*

# Surveillance

Key components:

- Risk-based
- Adaptive sampling
- Emerging & sporadic disease





# Surveillance

Key components:

- Risk-based
- Adaptive sampling
- Emerging & sporadic disease
- Tie in with Biosecurity ops



# Surveillance

## Key components:

- Risk-based
- Adaptive sampling
- Emerging & sporadic disease
- Tie in with Biosecurity ops
- Alternative sampling tech

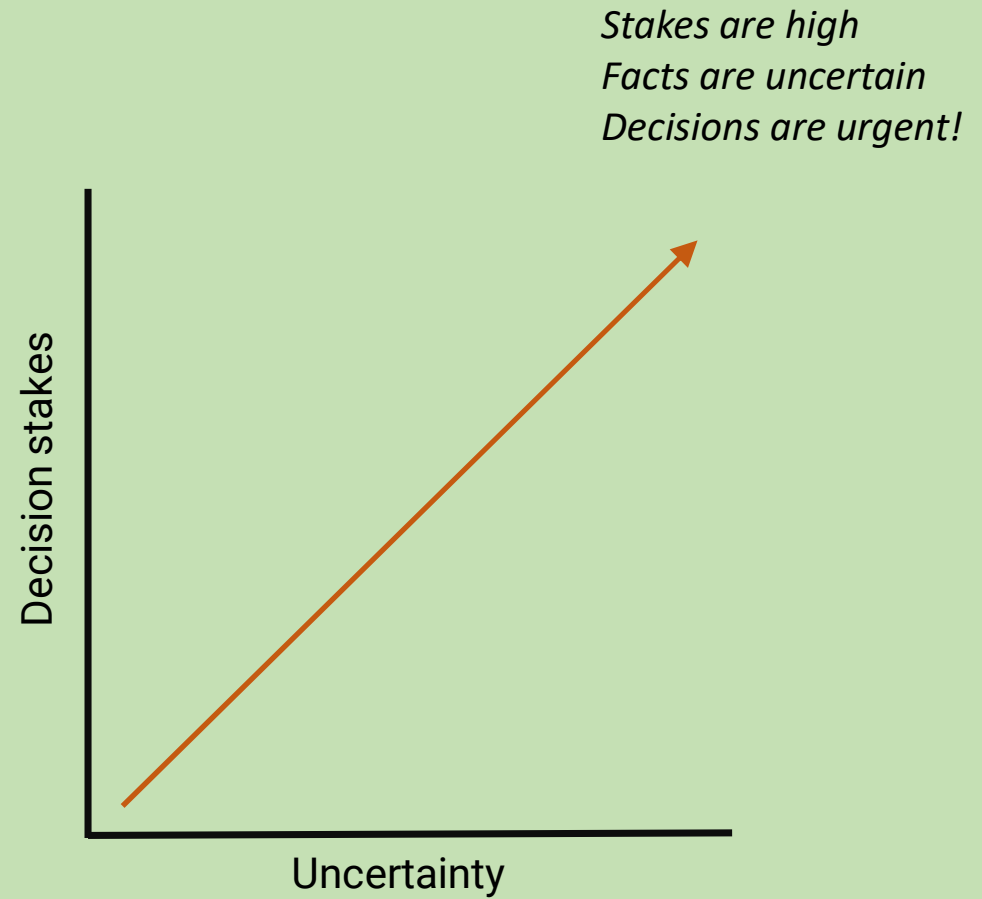




# Response

Key components:

- High stakes, high uncertainty

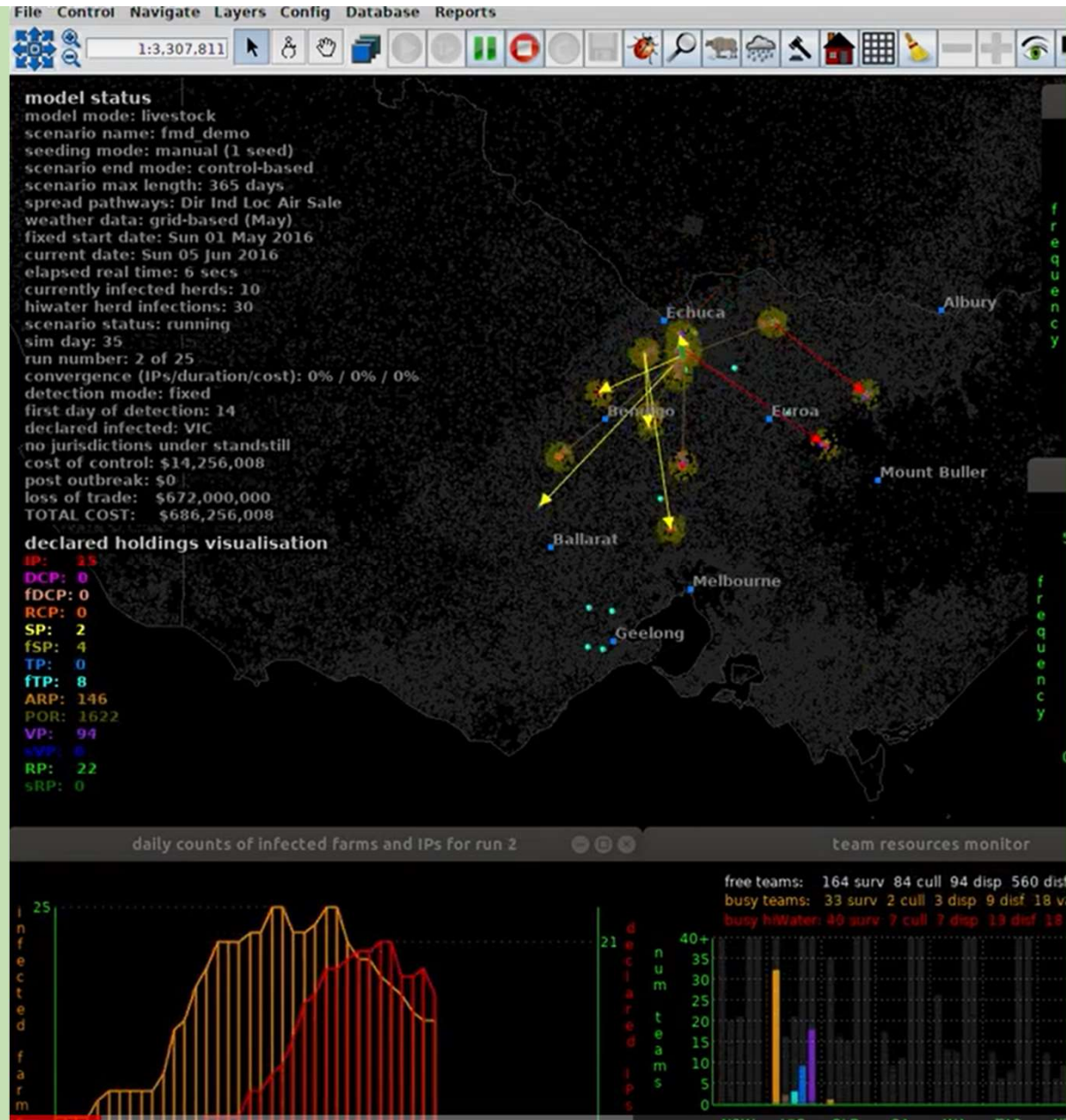




# Response

## Key components:

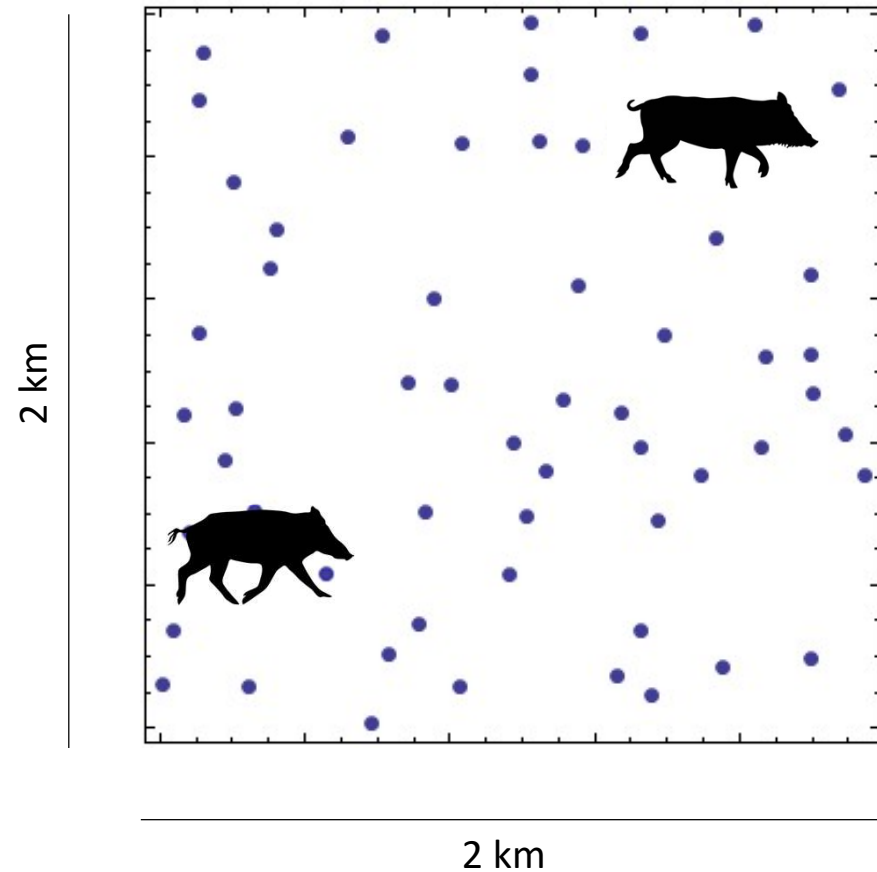
- High stakes, high uncertainty
- Current recs for wild populations based on
  - Very limited data
  - Very limited scope
  - Models with very restrictive assumptions



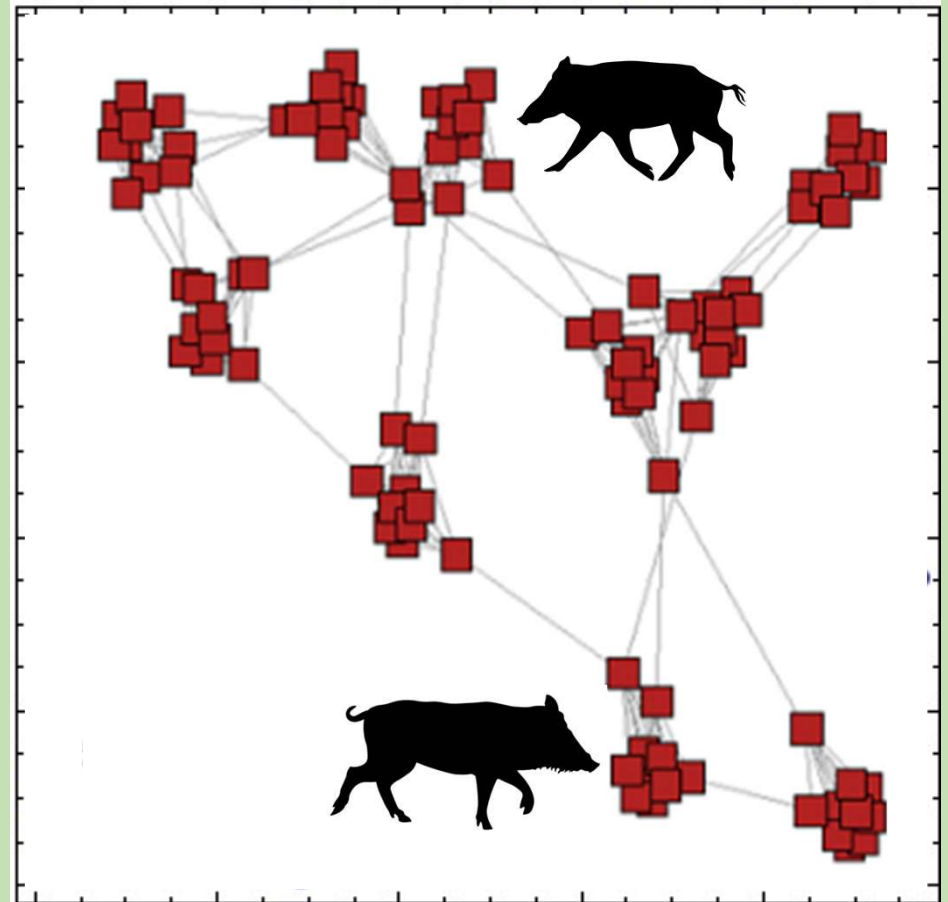
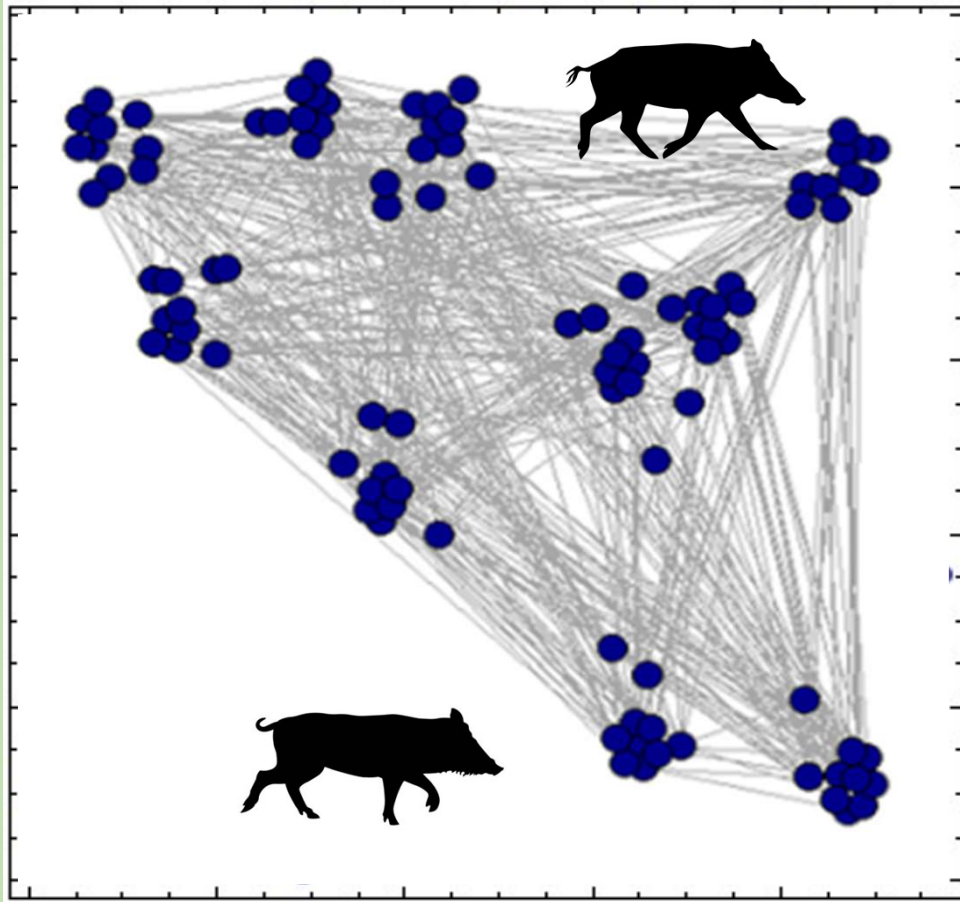
# Response

Key components:

- High stakes, high uncertainty
- Current recs for wild populations based on
  - Very limited data
  - Very limited scope
  - Models with very restrictive assumptions



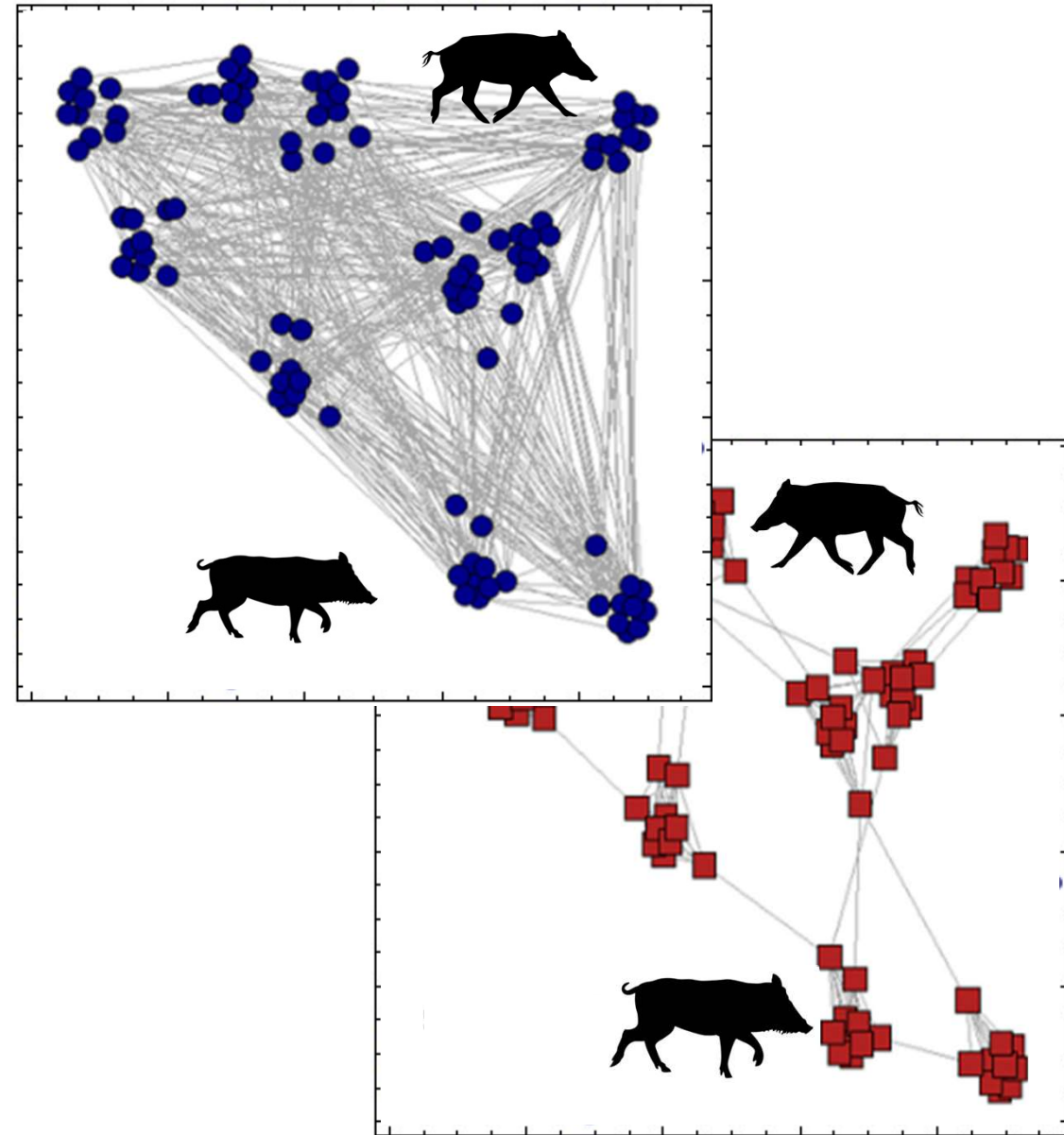




# Response

Key components:

- High stakes, high uncertainty
- Current recs for wild populations based on
  - Very limited data
  - Very limited scope
  - Models with very restrictive assumptions
- Need reliable predictive models for wild populations





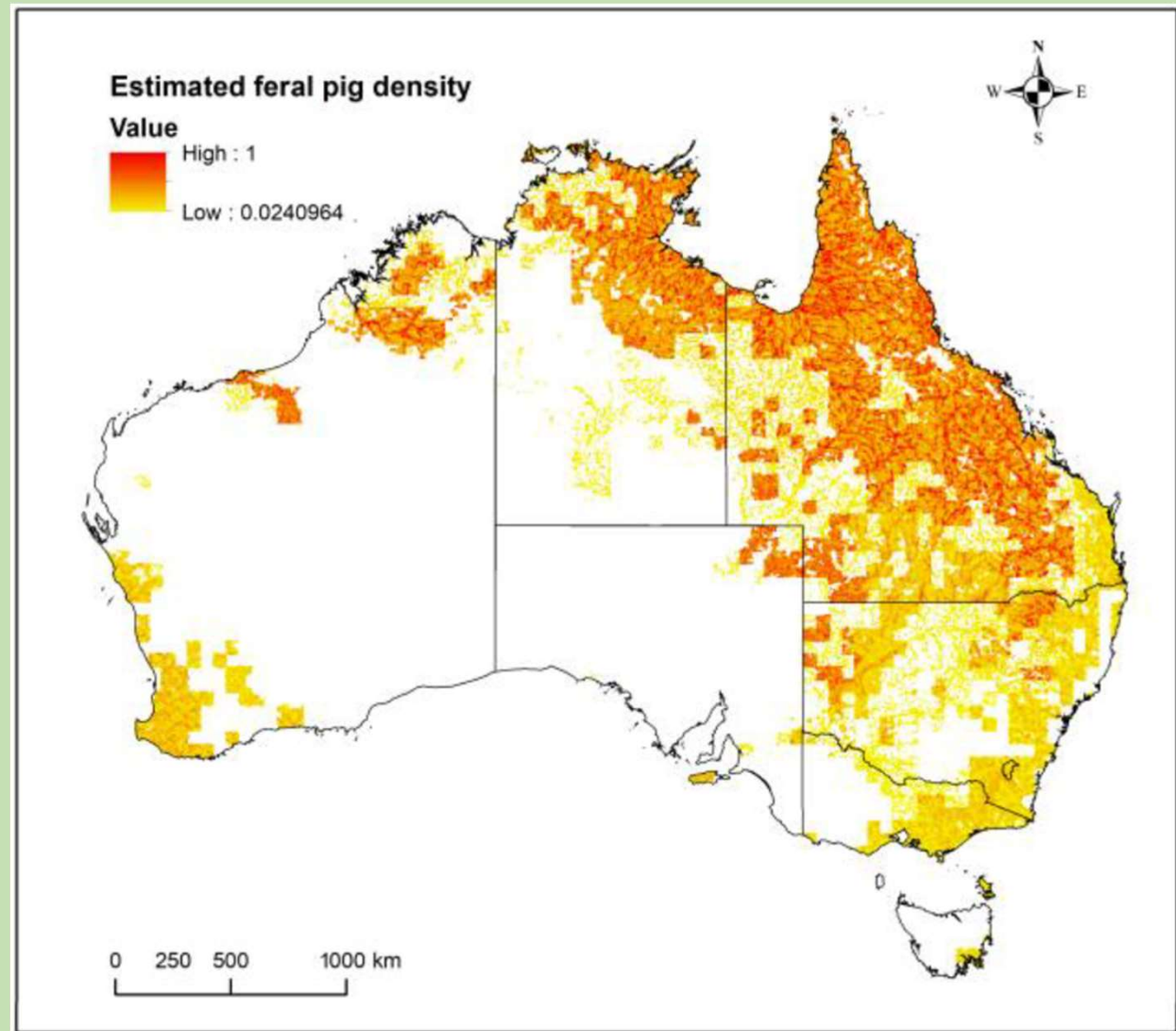
# Response

- Better models need better data
  - Host movement and connectivity
  - Behavioural response to management



# Response

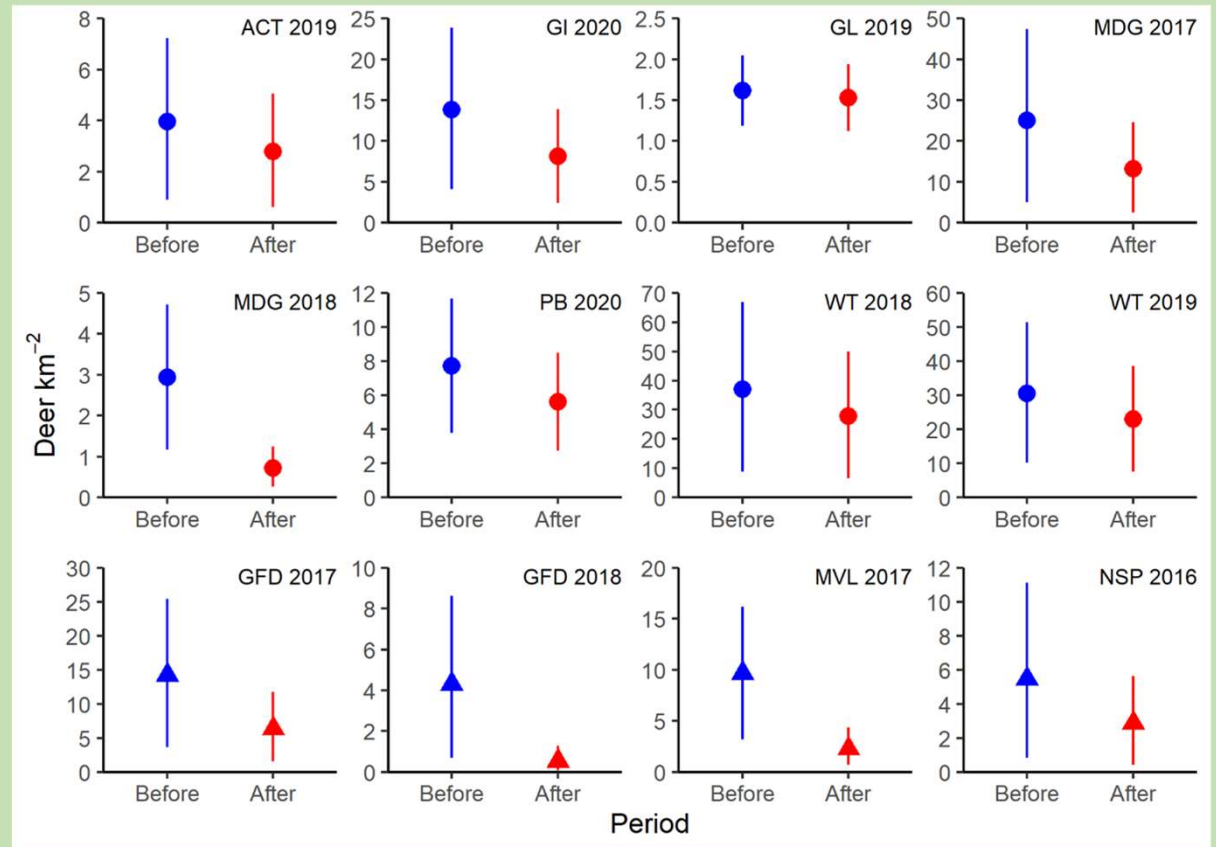
- Better models need better data
  - Wild host density





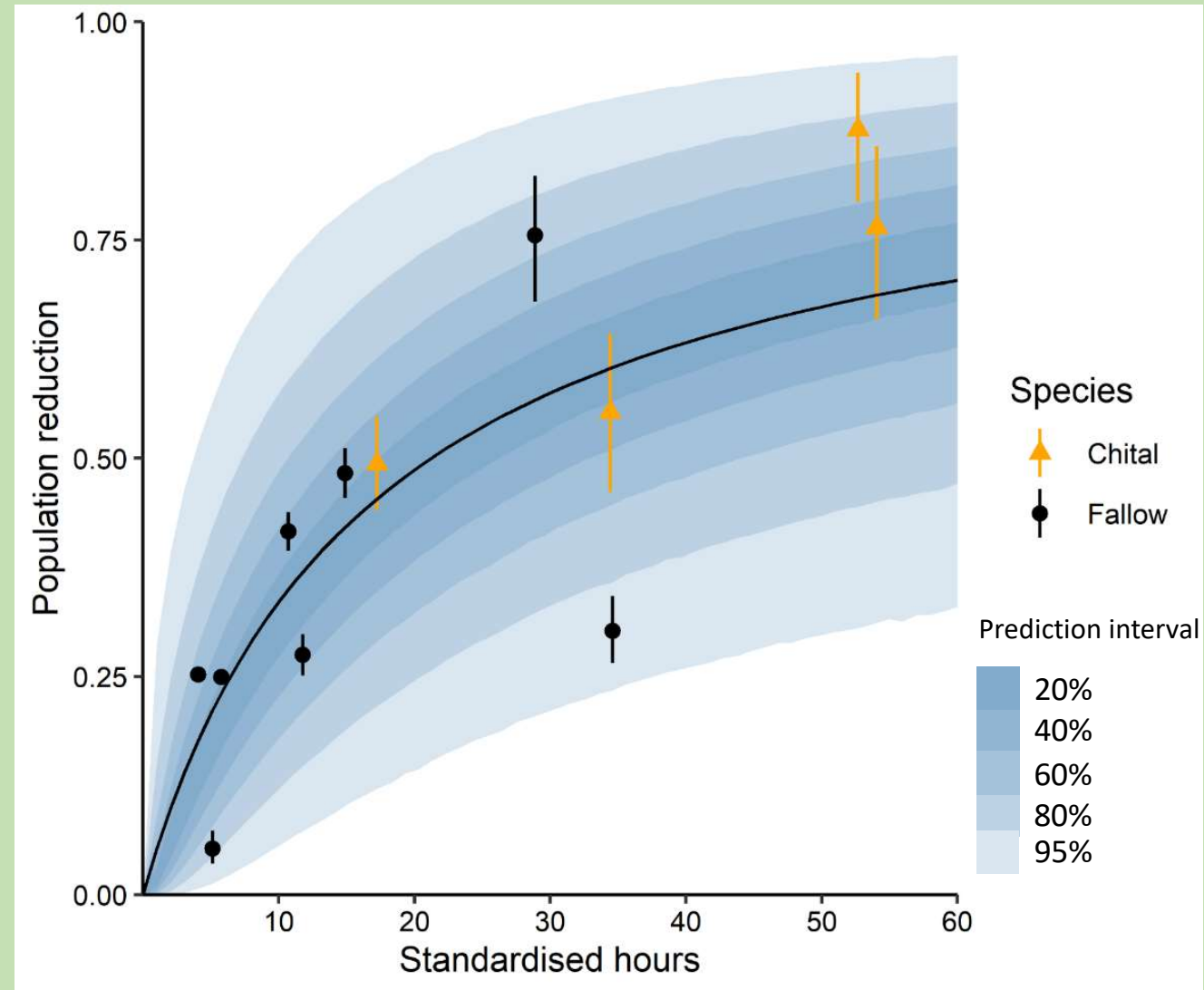
# Response

- Better models need better data
  - Control efficacy



# Response

- Better models need better data
  - Effort:Outcomes





# Conclusion

- Risk of wild incursion has been neglected (recently)
- We aim to reduce:
  - risk of long establishment
  - uncertainty of response

**Intensity, severity and impacts of EAD incursion in wild populations**

